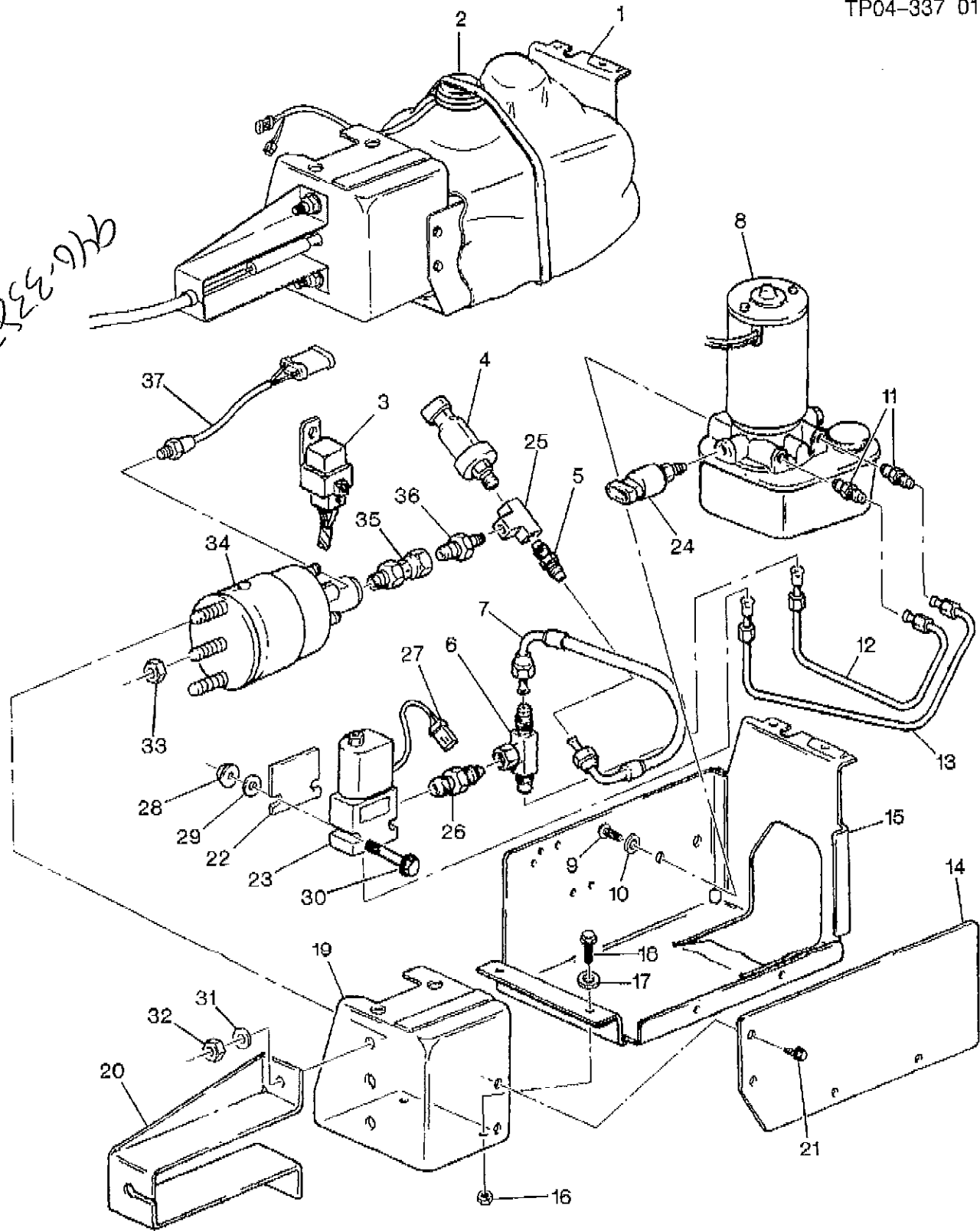


222-936



as



Call	Part #	Group	Description	Usage	Year	Qty	Pkg	H
1995-1997 P3(32-42) PARKING BRAKE SYSTEM-ACTUATOR ASM (J71)								
C7P - GVW RATING(16000 LBS)								
	001	15661298	DISCONROD, PARK BRK CONT VLV	P3 (32)(J71)	1995-1997	01		
	001	15729350	04.591 BRACKET, PARK BRK ACTR (CHANNELED CABLE SUPPORT) (**VPI 1-877-846-8243)	P3 (J71)	1996-1998	01		
	001	15729351	NS ACTUATOR, PARK BRK (W/BRKT) (SERVICED BY COMPONENTS2-36)		1995-1997			
	001	15961609	04.591 BRACKET, PARK BRK ACTR (5 HOLES MARKED "B") (**VPI 1-877-846-8243)	P3 (J71)	1996-1998	01		
	001	15961610	04.591 BRACKET, PARK BRK ACTR (W/SHIELD) (**VPI 1-877-846-8243)	P3 (J71)	1996-1998	01		
	001	15967677	04.589 SPACER, PARK BRK ACTR POSN SW CAM (**VPI 1-877-846-8243)	P3 (32)(J71)	1997-1997	01		
	002	12101822	04.591 CONNECTOR, MDL-PARK BRK CONT (TOP RETAINER) (BLACK) (8-WAY FEMALE) (W/LEADS) (2.535) (ACDelco #PT214)	P3	1997-1999	01		
	002	12153472	DISCONHARNES, PARK BRK ACTR WRG (INCLUDES #3, RELAY)	P3 (32-42)(J71)	1994-1997	01		
	003	12177238	04.600 RELAY, PARK BRK PUMP MOT (4-WAY MALE) (USED T/W 12160380) (4.815)	P3 (J71)	1996-1997	01		
	004	10218778	04.589 SWITCH, PARK BRK PRESS IND (2 PIN TERMINAL) (6.670)	P3 (32-42)(J71)	1995-1999	01		
	005	15970358	04.600 CONNECTOR, PARK BRK ACTR INL PIPE (1.375IN. LENGTH) (ENDS MATCH)		1994-1999			
	006	15667425	04.800 TEE, PARK BRK ACTR INL PIPE (3-WAY TEE CONN, 2 PLACES (MALE)7/16-20 X 1 PLACE (FEMALE)7/16-20)		1994-1999			
	007	15961615	04.600 HOSE, PARK BRK ACTR FRT INL (**VPI 1-877-846-8243)	P3 (J71)	1997-1999	01		
	008	12544820	04.600 CAP, ELEC PARK BRK PUMP RESVR (PUMP ASMS 15954861, 15966009, 15971034)	P3 (32)(J71)	1994-1997	01		
	008	15743820	04.600 PUMP, PARK BRK (W/MOT) (REMOVE RED VENT PLUG BETWEEN PIPE FTGS PRIOR TO INSTALLATION)	P3 (J71)	1994-1997	01		
	009	09424338	08.900 BOLT, HEX 3/8-16 X 3/4 PH, 300M STL (PARK BRK (W/MOT))		1994-1999	AR		
	010	15614758	08.929 WASHER, SPL FL, M10X22X3.1 11ID, 21.8OD, 2.9THK, W/4 FL SAE 1060HRC 42, DO (PARK BRK (W/MOT))		1994-1999	AR		
	011	15687429	04.800 CONNECTOR, PARK BRK PRESS SOL VLV OTLT PIPE (1.24" LENGTH) (ACDelco #179-2128) (AUTO APPLY PARK BRAKE SYSTEM IS ACTIVATED BY AN ELECTRIC PUMP W/INDICATOR LIGHT ON I/P)	P3 (J71)	1995-1999	01		
	012		NS PIPE, PARK BRK ACTR INL		1995-1997	AR		
	012	09403525	08.963 NUT, HYD 37 DEG FLD TUBE, .437X20.X.000, C (PARK BRK ACTR)		1994-1999	AR		
	012	12548430	08.964 TUBING, BRK, 1/4" X 16 FT ROLL, STL (PARK BRK ACTR INL)		1994-1999	AR		
	013		NS PIPE, PARK BRK C/VLV OTLT		1995-1997	AR		
	013	09403525	08.963 NUT, HYD 37 DEG FLD TUBE,		1994-1999	AR		

Copyright 2009 General Motors Corporation

Part No.	Quantity	Description	Notes	Year Range
		.437X20.X.000, C (PARK BRK ACTR)		
013	12548430	08.964 TUBING, BRK, 1/4" X 16 FT ROLL, STL (BRK & FUEL FEED & FUEL RTN & EVAP EMIS)		1994-1999 AR
014	15961617	04.600 SHIELD, PARK BRK PUMP (**VPI P3 (J71) 1-877-846-8243)		1995-1998 01
015	15961609	04.591 BRACKET, PARK BRK ACTR ((INCL SPACER#15974911)) (5 HOLES MARKED "B")		1994-1999 AR
016	00124829	08.915 NUT, HEX 3/8-16 CAD OR Z 286M (PARK BRK ACTR)		1994-1999 AR
017	02436163	08.929 WASHER, FLAT HARDENED, 3/8 (PARK BRK ACTR)		1994-1999 AR
018	09420462	08.900 BOLT (PARK BRK ACTR)		1994-1999 AR
019	15961610	04.591 BRACKET, PARK BRK ACTR (W/SHIELD)		1994-1999 AR
020	15729350	04.591 BRACKET, PARK BRK ACTR (CHANNELED CABLE SUPPORT)		1994-1999 AR
021	11508534	08.900 BOLT, HFH, M8X1.25X16, 16.8 O.D., MACH PT, 6171M, POR (PARK BRK ACTR)		1994-1999 AR
022	15967671	04.600 SPACER, PARK BRK PRESS SOL VLV (**VPI 1-877-846-8243)	P3 (J71)	1995-1998 01
023	15149862	04.600 VALVE, PARK BRK PRESS (AUTO APPLY PARKING BRAKE SYSTEM IS ACTIVATED BY AN ELECTRIC PUMP WINDICATOR LIGHT ON I/P.)	P3 (J71)	1995-1997 01
024	15961566	04.600 SWITCH, PARK BRK PUMP MOT (ACDelco #15961566)	P3 (J71)	1995-1997 01
025	15687423	04.600 TEE, PARK BRK ACTR INL PIPE (3-WAY TEE CONN, 2 PLACES (MALE)7/16-20 X 1 PLACE (FEMALE)7/16-20)	P3 (J71)	1995-1998 01
025	15967674	04.600 TEE, PARK BRK ACTR INL PIPE (3 WAY (FEMALE)TEE CONN., 7/16-20 X 7/16-20 X 3/8-24 THDS., STL) (**VPI 1-877-846-8243)	P3 (J71)	1995-1998 01
026	15967675	04.600 CONNECTOR, PARK BRK ACTR INL PIPE (1.28IN. LENGTH)		1994-1999 AR
027	12126050	02.697 CONNECTOR, LP-B/U (1 WAY FEMALE) (2.700) (**VPI 1-877-846-8243)	P3	1994-1999 02
028	11503749	08.917 NUT, M6X1 (ACDelco #11503749)		1994-1999 AR
029	15614757	08.929 WASHER (16.450)		1994-1999 AR
030	11503874	08.900 BOLT, HEX M6X1X60 10.9 PC (ACDelco #11503874)		1994-1999 AR
031	11609636	04.785 WASHER, PARK BRK CBL BRKT (M16 X 32 X 3 MM) (8.929)		1994-1999 AR
032	12337822	08.917 NUT-HEX, 5/8-16X.329, GM 301-M, CP (ACDelco #12337822)		1994-1999 AR
033	00124934	08.915 NUT		1994-1999 AR
034	15961611	04.591 ACTUATOR, PARK BRK	P3 (J71)	1995-1997 01
035	15983146	04.600 CONNECTOR, PARK BRK ACTR INL PIPE (CONNECTS TO ACTUATOR (DOUBLE))		1994-1999 AR
036	15983145	DISCONNECTOR, PARK BRK ACTR INL PIPE		1994-1999 AR
037	15688635	04.589 SWITCH, PARK BRK ACTR POSN (POA ACTUATOR ASM ATTACHED TO CROSSMEMBER)	P3 (J71)	1994-1999 01
037	15961565	04.589 SWITCH, PARK BRK ACTR POSN (ATTACHES TO BRKT & LEVER ASM BELOW STRG COLUMN)	P3 (32)(J71)	1997-1997 01